



We honor PRIDE month

This month, we celebrate LGBTQ+ achievements and recognize the impact members of the LGBTQ+ community have had on history, locally and nationally. BGE is committed to diversity, equity, and inclusion in our communities and works to achieve equal justice and equal opportunity for all. Each year the Baltimore chapter of Exelon Pride, the company’s employee resource group that promotes a positive workplace environment for all employees regardless of sexual orientation, organizes many activities to celebrate Pride Month. For more information visit [BGE.COM/diversity](https://www.bge.com/diversity).

READY FOR SUMMER?

As summer temperatures begin to rise, you can stay cool while managing your energy use. Here are four simple tips:



Keep your thermostat set to 78 degrees. Every degree you raise the thermostat saves even more.



Set your ceiling fans to spin counterclockwise and keep your home breezy on warm days.

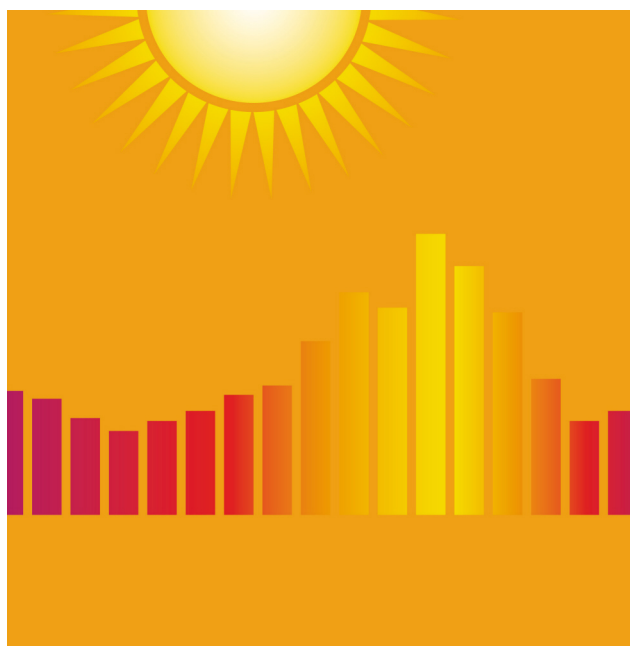


Upgrade your space with energy efficient lights, programmable thermostats and more. Visit [BGEMarketplace.com](https://www.bgemarketplace.com) to shop now.



Reduce your use on weekdays between 1 and 7 pm to help save energy.

For more ways to save, visit [BGE.COM/StartSaving](https://www.bge.com/StartSaving).





moving just got easier

You can now start, stop, and transfer your electricity and gas service up to 30 days before your move by logging onto **BGE.COM/StartStop** to complete the process from your computer or mobile device. It only takes a few minutes—you can even track your progress along the way. Download our welcome kit to find out what information is needed to get the moving process started. To learn more, visit **BGE.COM/StartStop**.

BGE CALENDAR YEAR 2020

Emission Disclosure Label

The following environmental information is for BGE customers with Standard Offer Service, which is provided to those customers who have remained with BGE and who have not chosen a competitive electricity supplier.

Power plants can generate electricity from a number of different fuel sources, resulting in different emissions. BGE reports fuel sources and emissions data to customers twice annually, allowing customers to compare data among the companies providing electricity service in Maryland.

This disclosure is required by the Maryland Public Service Commission.

Electricity Facts - PJM Regional Data

Electricity supplied from January 1, 2020 through December 31, 2020

Supply Mix

Natural Gas	39.84 %
Nuclear	34.49 %
Coal	19.44 %
Oil	0.16 %
Fuel Cell	0.03 %
Renewable Energy	
*Wind	3.30 %
*Hydroelectric	1.29 %
*Solid Waste	0.52 %
*Solar	0.48 %
*Captured Methane Gas	0.30 %
*Biomass	0.15 %
Total	100 %
*Renewable Energy Resources Subtotal	6.04 %

Air Emissions

The amount of air emissions associated with the generation of electricity for the PJM region, which includes BGE, is shown below.

Emission Type	Lbs. per MWh	Percentage of PJM Regional Average
Nitrogen Oxides (NO _x)	0.36	100.0 %
Sulfur Dioxide (SO ₂)	0.43	100.0 %
Carbon Dioxide (CO ₂)	791	100.0 %

CO₂ is a “greenhouse gas” which may contribute to global climate change. SO₂ and NO_x released into the atmosphere react to form acid rain. Nitrogen Oxides also react to form ground level ozone, an unhealthy component of “smog”.

ENERGY SAVINGS MADE EASY



« Saving and managing energy

is easy with the help of the BGE app—pay bills, set up alerts, view usage, even report an outage from your cell phone or smart watch.

Visit **BGE.COM/WhatsImportant** for more information. »

Let's keep building what's important to all of us.