



An Exelon Company

LightSpeed Communications

COMMUNICATIONS TOWER INVENTORY

ANNE ARUNDEL COUNTY

ANNAPOLIS

BRANDON SHORES

TRACY'S LANDING

PINEY ORCHARD

WAUGH CHAPEL

BALTIMORE CITY

ERDMAN

MONUMENT STREET

PIMLICO

BALTIMORE COUNTY

GRANITE

IVY HILL

LONG GREEN

MANOR GATE

MAYS CHAPEL

MIDDLEBOROUGH

NORTHEAST

NORTHWEST

PUMPHREY

RAPHAEL ROAD

RIVERSIDE

RBC/EOB

VIADUCT

WINDY EDGE

CALVERT COUNTY

CCNPP GATE

HUNTINGTOWN

CARROLL COUNTY

WESTMINSTER

LEIDY ROAD

CECIL COUNTY

CRAIGTOWN

HARFORD COUNTY

CONASTONE

GRACETON

PERRYMAN

STEPNEY

HOWARD COUNTY

HIGH RIDGE

HOWARD

PRINCE GEORGE'S
COUNTY

CONTEE ROAD I

CONTEE ROAD II

SANDY SPRING

ANNE ARUNDEL COUNTY

ANNAPOLIS

County	Anne Arundel
Address	151 Defense Highway, Annapolis, MD 21401
Latitude	38 59 02.9
Longitude	-76 33 27.9
ASR	1036329
Type	Andrew 3ST; 3-Leg; Self-Support
Height	290'
Elevation	376'
Map to Google	



BRANDON SHORES

County	Anne Arundel
Address	1000 Brandon Shores Rd., Pasadena, MD 21226
Latitude	39 10 50.9
Longitude	-76 32 08.7
ASR	1036328
Type	Rohn SSMW; 3-Leg; Self-Support
Height	300'
Elevation	33'
Map to Google	



TRACY'S LANDING

County	Anne Arundel
Address	50 Old Solomon's Island Rd., Lothian, MD 20711
Latitude	38 48 43.5
Longitude	-76 35 55.6
ASR	1036312
Type	Rohn S4S; 4-Leg; Self Support
Height	200'
Elevation	155'
NOT AVAILABLE – BGE USE ONLY	



PINEY ORCHARD

County	Anne Arundel
Address	730 New Waugh Chapel Rd. Odenton, MD 21113
Latitude	39 04 21.67
Longitude	-76 43 3.25
ASR	1271819
Type	Monopole
Height	160'
Elevation	333'
Map to Google	



WAUGH CHAPEL

County	Anne Arundel
Address	1 Waugh Chapel Rd., Gambrills, MD 21054
Latitude	39 02 46.7
Longitude	-76 40 36.7
ASR	1036311
Type	Rohn S4S; 4-Leg; Self-Support
Height	250'
Elevation	133'
Map to Google	



BALTIMORE CITY

ERDMAN

County	Baltimore City
Address	3607 Federal St., Baltimore, MD 21213
Latitude	39 18 31.4
Longitude	-76 33 52.2
ASR	N/A
Type	Rohn S4SS; 4-Leg; Self-Support
Height	150'
Elevation	86'
Map to Google	



MONUMENT STREET

County	Baltimore City
Address	512 East Monument St., Baltimore, MD 21202
Latitude	39 17 50.7
Longitude	-76 36 27.5
ASR	1036315
Type	American Bridge Co ; 4-Leg; Self-Support
Height	200'
Elevation	36' plus 85' to rooftop
NOT AVAILABLE – BGE USE ONLY	



PIMLICO

County	Baltimore City
Address	3731 W. Belvedere Avenue, Baltimore, MD 21215
Latitude	39 20 43.9
Longitude	-76 40 49.7
ASR	N/A
Type	American Bridge Co ; 4-Leg; Self-Support
Height	125'
Elevation	437'
Map to Google	



BALTIMORE COUNTY

GRANITE

County	Baltimore
Address	3313 Old Court Rd., Granite, MD 21163
Latitude	39 20 20.3
Longitude	-76 50 22.0
ASR	1036321
Type	Andrews 'G' F.S; 4-Leg; Self-Support
Height	250'
Elevation	427'
Map to Google	



IVY HILL

County	Baltimore
Address	1819 Ridge Rd., Reisterstown, MD 21138
Latitude	39 23 46.8
Longitude	-76 50 35.9
ASR	N/A
Type	Monopole
Height	100' (New Tower Slated in 2011 – 108')
Elevation	623'
Map to Google	



LONG GREEN

County	Baltimore
Address	East side Manor Rd., North of Long Green Rd., Long Green, MD 21057
Latitude	39 28 42.9
Longitude	-76 31 09.1
ASR	1036317
Type	Blaw-Knox; 4-Leg; Self-Support
Height	250'
Elevation	519'
Map to Google	



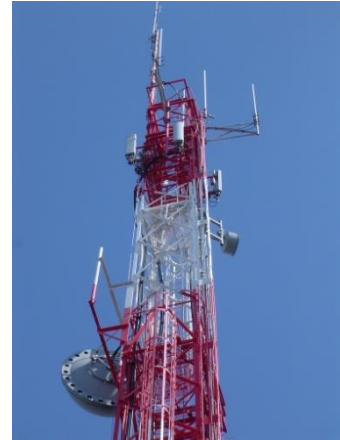
MANOR GATE

County	Baltimore
Address	14812 Manor Rd., Monkton, MD 21111
Latitude	39 31 51.2
Longitude	-76 32 51.7
ASR	1036316
Type	Rohn SSVMW; 3-Leg; Self-Support
Height	265'
Elevation	595'
Map to Google	



MAYS CHAPEL

County	Baltimore
Address	12011 Jenifer Road, Cockeysville, MD 21030
Latitude	39 27 17.4
Longitude	-76 40 04.4
ASR	N/A
Type	Lehigh; 4-Leg; Self- Support
Height	150'
Elevation	635'
Map to Google	



MIDDLEBOROUGH

County	Baltimore
Address	599 Back River Neck Rd., Essex, MD 21221
Latitude	39 17 43.7
Longitude	-76 25 54.7
ASR	1267958
Type	Monopole
Height	190'
Elevation	25'
Map to Google	



NORTHEAST

County	Baltimore
Address	10222 Bird River Rd., Middle River, MD 21220
Latitude	39 21 54.2
Longitude	-76 25 36.5
ASR	1207745
Type	Lehigh; 4-Leg; Self-Support
Height	140'
Elevation	88'
Map to Google	



NORTHWEST

County	Baltimore
Address	213 Cockeys Mill Rd., Reisterstown, MD 21136
Latitude	39 27 52.1
Longitude	-76 50 32.7
ASR	1036314
Type	L.C. Moore; 4-Leg; Self-Support
Height	200'
Elevation	654'
Map to Google	



PUMPHREY

County	Baltimore
Address	4547 Annapolis Rd., Lansdowne, MD 21227
Latitude	39 13 37.38
Longitude	-76 38 13.8
ASR	1280546
Type	Monopole
Height	190'
Elevation	22'
Map to Google	



RAPHAEL ROAD

County	Baltimore
Address	Philadelphia Rd., Kingsville, MD 21087
Latitude	39 24 57.8
Longitude	-76 24 03.8
ASR	1036313
Type	L.C. Moore; 4-Leg; Self-Support
Height	186'
Elevation	149'
Map to Google	



RIVERSIDE

County	Baltimore
Address	4000 Broening Hwy., Baltimore, MD 21224
Latitude	39 14 15.9
Longitude	-76 30 41.4
ASR	N/A
Type	Rohn S4S; 4-Leg; Self-Support
Height	120'
Elevation	16'
Map to Google	



RBC/EOB

County	Baltimore
Address	7309 Windsor Mill Road, Baltimore, MD 21244
Latitude	39 20 12.1
Longitude	-76 45 25.5
ASR	N/A
Type	Heery; 3-Leg; Self-Support
Height	191'
Elevation	508'
Map to Google	



VIADUCT

County	Baltimore
Address	5161 Gundry's Lane, Halethorpe, MD 21227
Latitude	39 13 33.55
Longitude	-76 42 48.18
ASR	N/A
Type	Rohn SSMW; 3-Leg; Self-Support
Height	180'
Elevation	200'
Map to Google	



WINDY EDGE

County	Baltimore
Address	3418 Northwind Rd., Parkville, MD 21234
Latitude	39 24 41.6
Longitude	-76 29 46.6
ASR	1036310
Type	4-Leg; Self-Support
Height	186'
Elevation	346'
Map to Google	



CALVERT COUNTY

CCNPP GATE

County	Calvert
Address	1750 Calvert Cliffs Boulevard, Lusby, MD 20657
Latitude	38 26 02.1
Longitude	-76 26 58.5
ASR	1036327
Type	Rohn 90; Guyed
Height	385'
Elevation	141'
Map to Google	



HUNTINGTOWN

County	Calvert
Address	South side of Kings Landing Road, 1.5 miles west of Huntingtown, approx. 800' NW of Hollins Cliff Road, Huntingtown, MD 20639
Latitude	38 37 33.6
Longitude	-76 38 12
ASR	1036318
Type	Rohn S4S ; 4-Leg; Self-Support
Height	200'
Elevation	171'



[Type text]

Map to Google

[Type text]

CARROLL COUNTY

WESTMINSTER

County	Carroll
Address	1911 Old Westminster Pike, Finksburg, MD 21048
Latitude	39 31 48.1
Longitude	-76 55 50.9
ASR	None
Type	Rohn SSV; 3-Leg; Self-Support
Height	180'
Elevation	766'
Map to Google	



LEIDY ROAD

County	Carroll
Address	Leidy Road, Westminster, MD 21157
Latitude	39 33 38.05
Longitude	-76 58 00.13
ASR	1271521
Type	Monopole
Height	130'
Elevation	140'
NOT AVAILABLE – BGE USE ONLY	



CECIL COUNTY

CRAIGTOWN

County	Cecil
Address	340 Perry Lawn Drive, Port Deposit, MD 21904
Latitude	39 36 43.4
Longitude	-76 03 51.8
ASR	1036324
Type	Andrew 3ST; 3-Leg; Self-Support
Height	360'
Elevation	426'
Map to Google	



HARFORD COUNTY

CONASTONE

County	Harford
911 Address	5025 Jolly Acres Rd., White Hall, MD 21161
Latitude	39 41 15.7
Longitude	-76 32 24.9
ASR	1036325
Type	Rohn S4S; 4-Leg; Self-Support
Height	200'
Elevation	737'
Map to Google	



GRACETON

County	Harford
911 Address	533 Wheeler School Rd, Pylesville, MD 21132
Latitude	39 42 07.5
Longitude	-76 23 10.7
ASR	1036322
Type	Rohn S4S; 4-Leg; Self-Support
Height	200'
Elevation	478'
Map to Google	



PERRYMAN

County	Harford
911 Address	900 Chelsea Road, Aberdeen, MD 21001
Latitude	39 26 27.5
Longitude	-76 12 59.9
ASR	1267668
Type	Monopole
Height	195'
Elevation	32'
Map to Google	



STEPNEY

County	Harford
911 Address	923 Old Philadelphia Road, Aberdeen, MD 21001
Latitude	39 29 18.96
Longitude	-76 10 58.79
ASR	1271818
Type	Monopole
Height	115'
Elevation	189'
Map to Google	



HOWARD COUNTY

HIGH RIDGE

County	Howard
Address	8271 Leishear Rd., Laurel, MD 20723
Latitude	39 08 27.5
Longitude	-76 52 21.6
ASR	1036320
Type	Rohn S4S; 4-Leg; Self-Support
Height	200'
Elevation	315'
Map to Google	



HOWARD

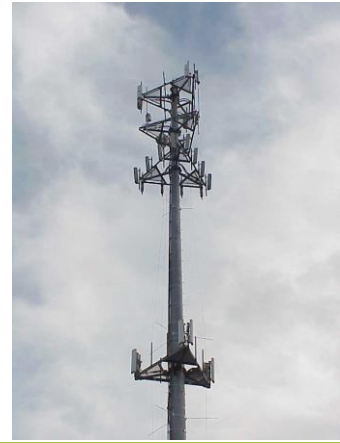
County	Howard
Address	5130 Ilchester Rd., Ellicott City, MD 21043
Latitude	39 13 51.3
Longitude	-76 46 51.8
ASR	1036322
Type	Monopole
Height	213'
Elevation	460'
Map to Google	



PRINCE GEORGE'S COUNTY

CONTEE ROAD I

County	Prince George's
Address	8303 Contee Rd., Laurel, MD 20708
Latitude	39 04 28.91
Longitude	-76 51 55.44
ASR	N/A
Type	Monopole
Height	165'
Elevation	200'
Map to Google	



CONTEE ROAD II

County	Prince George's
Address	8303 Contee Rd., Laurel, MD 20708
Latitude	39 04 29.56
Longitude	-76 51 55.99
ASR	N/A
Type	Monopole
Height	170'
Elevation	190'
Map to Google	



SANDY SPRING

County	Prince George's
Address	6101 Chevy Chase Drive, Laurel, MD 20707
Latitude	39 05 36.73
Longitude	-76 54 13.61
ASR	1020069
Type	Monopole
Height	150'
Elevation	159'
Map to Google	

